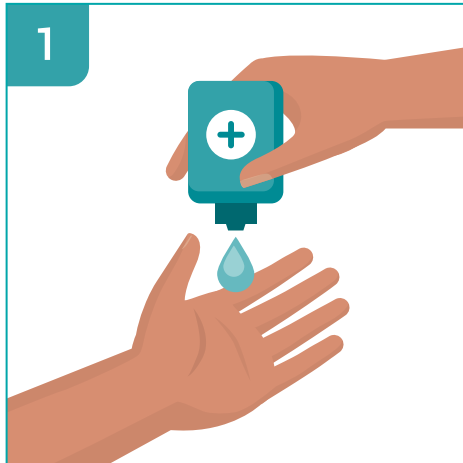




How to Use Hand Sanitizer

If soap and water are not available, use a hand sanitizer that contains at least 60% alcohol. Check the product label to see if the sanitizer contains at least 60% alcohol.



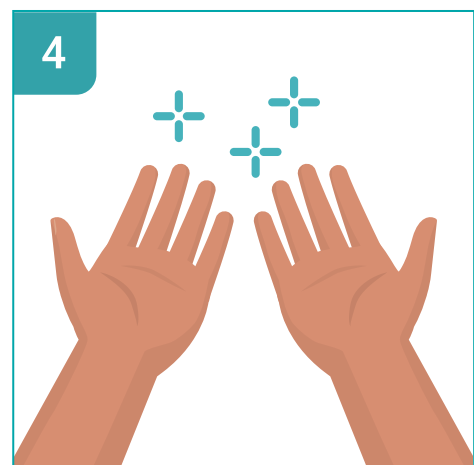
Apply the hand sanitizer to the palm of one hand (read the label to learn the correct amount).



Rub your hands together to cover all surfaces.



Rub the gel over all the surfaces of your hands and fingers until your hands are dry. This should take around 20 seconds.



Once the hand sanitizer is dry, your hands are clean.